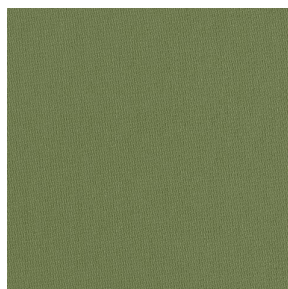
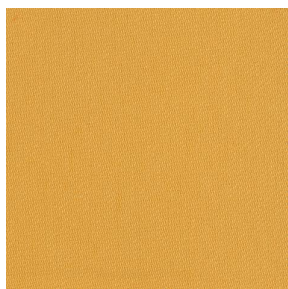


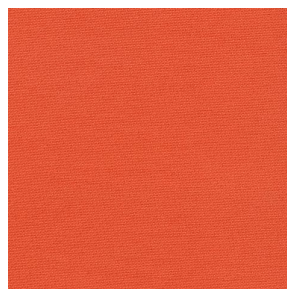
COLLIOURE



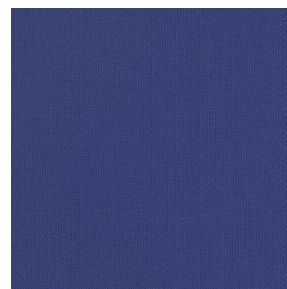
COLLIOURE Olive 61



COLLIOURE Miel 17



COLLIOURE Mandarine
93



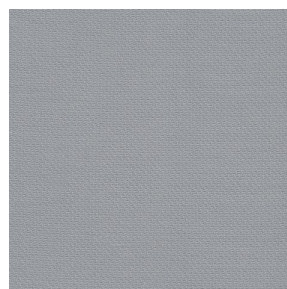
COLLIOURE Océan 91



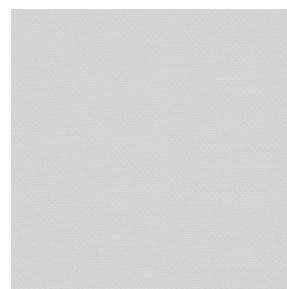
COLLIOURE Pervenche
13



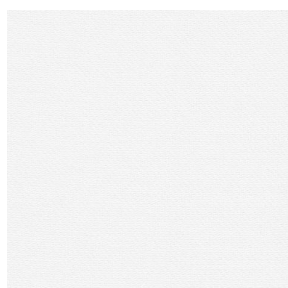
COLLIOURE Ardoise 08



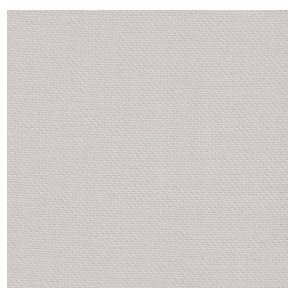
COLLIOURE Glacier 43



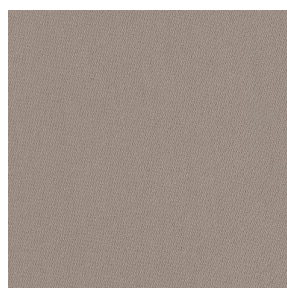
COLLIOURE Souris 31



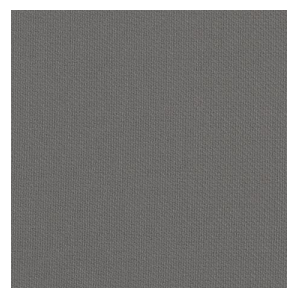
COLLIOURE Blanc 01



COLLIOURE Ivoire 02



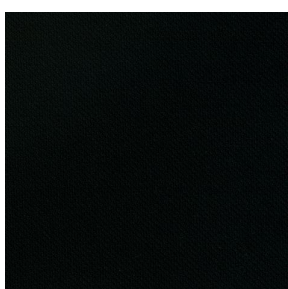
COLLIOURE Naturel 26



COLLIOURE Brun 23



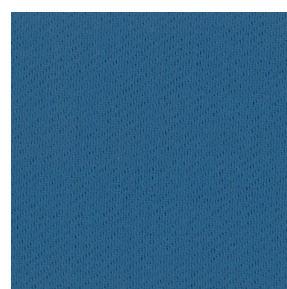
COLLIOURE Titanium 98



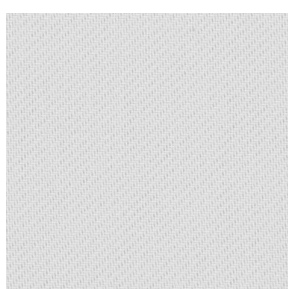
COLLIOURE Noir 12



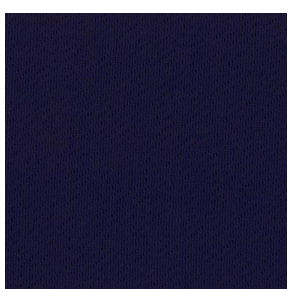
COLLIOURE eucalyptus
117



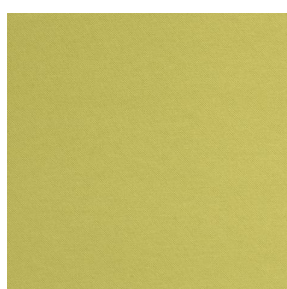
COLLIOURE navy 120



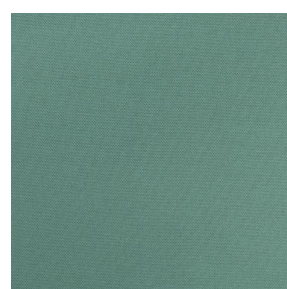
COLLIOURE lin 11



COLLIOURE marine 25



COLLIOURE
Bergamotte 121



COLLIOURE Absinthe
132



COLLIOURE



COLLIOURE Arctique 58



COLLIOURE Saumon
143



COLLIOURE Tomette 60



COLLIOURE Terre 107



COLLIOURE Aubergine
27



COLLIOURE Cacao 168



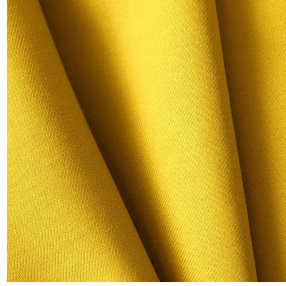
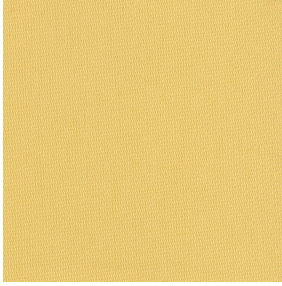
COLLIOURE Chataigne
55



COLLIOURE Chamois
111



COLLIOURE Pêche 52



COLLIOURE Agrume 69

Ce tissu uni sergé, se décline autour d'une gamme de 30 coloris.

Propriétés techniques



Non feu



Thermique

Applications Parois japonaises - Cache sommier - Rideaux - Coussin - Décoration murale - Store bateau

Composition 100% polyester FR

Poids 270 g/m²

Laize 140 cm / 280 cm

Sens Contre sens ou sens normal

Raccord ↔ cm ↓ cm

Conseils d'entretien

Label OekoTex / France Terre Textile

Minimum commande 1 mètre(s) linéaire(s)



Caractéristiques techniques

Non feu

M1 / B1 / IMO PASS / UNI 8456 / 9174 Classe Uno

Indices optiques

Réflexion lumière : **64 %**

Absorption lumière : **19 %**

Transmission lumière : **17 %**

Indices thermiques

réflexion solaire : **64 %**

absorption solaire : **17 %**

Transmission solaire : **19 %**

Transmission UV : **3 %**

Gtot : **Gt 36 % Fc 61 %**

Résistance

Solidité lumière (unités Class/8) **6**

Boulochage **2-3**

Stabilité dimensionnelle (%)

Chaîne **-3**

Trame **-0.5**

Martindale (Cycles) **35000**

Allongement rupture (mm)

Chaîne **26**

Trame **28**

Résistance rupture (daN)

Chaîne **100**

Trame **160**

